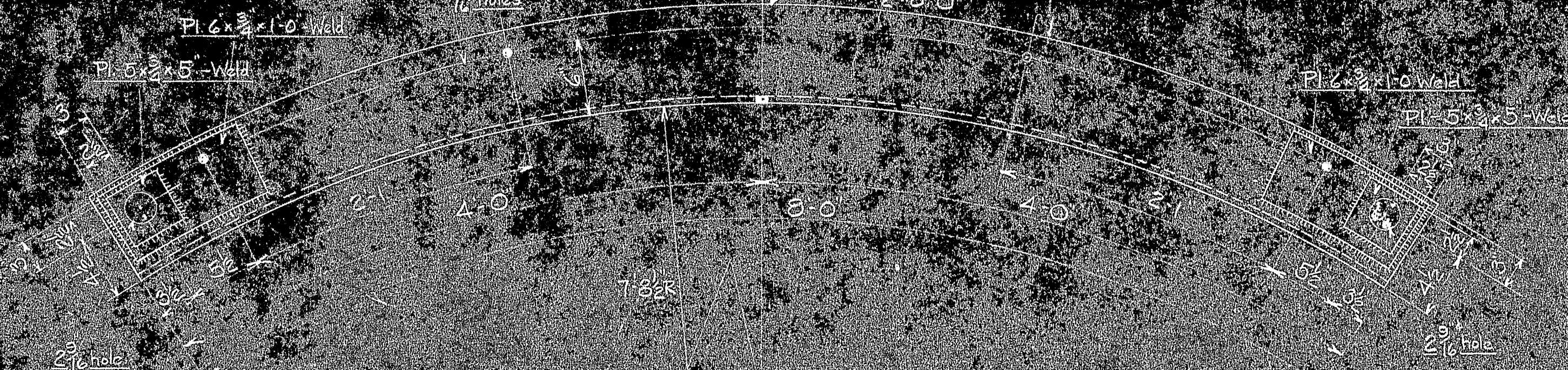
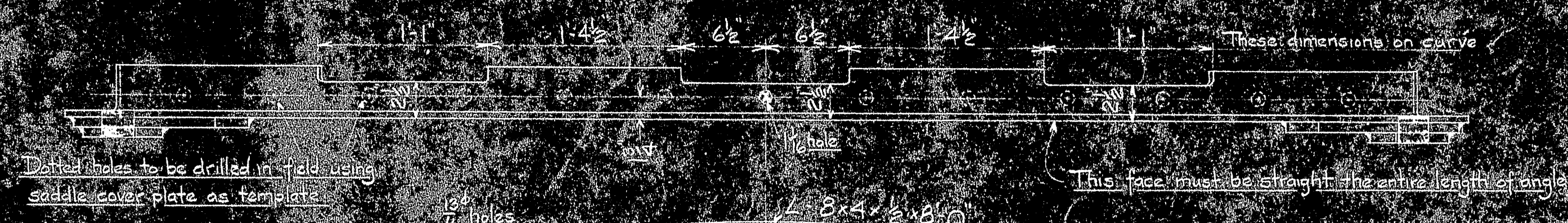
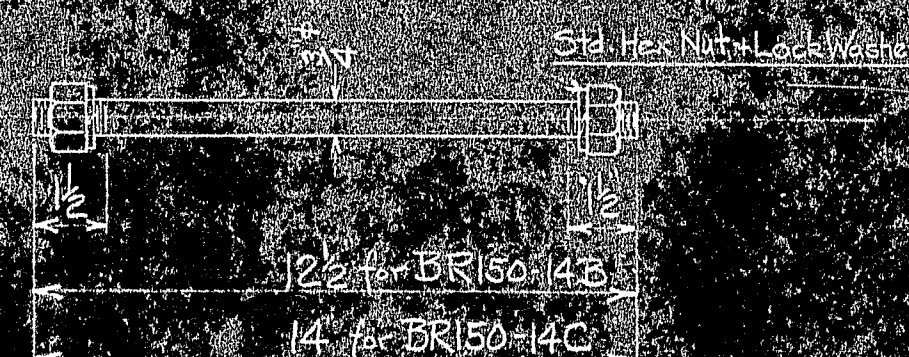


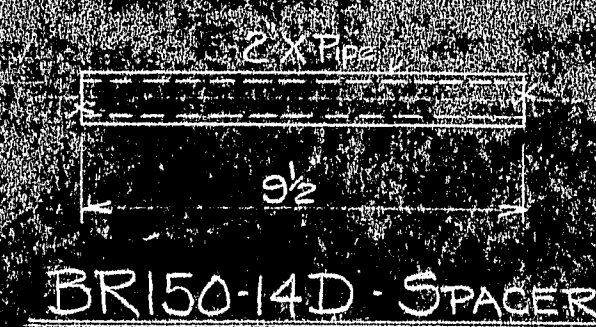
## ASSEMBLY OF LONGITUDINAL STAYS TO MAIN TOWER SADDLE



BR150-14A - BENT ANGLE



BR150-14B - BAR BOLT - 12 1/2" LG.  
BR150-14C - BAR BOLT - 14" LG.



BR150-14D-SPACER

BR150-14h	104	1" Std Lock Washer	
BR150-14g	104	2 Allen Cap Screws, E/2 long	
BR150-14D	8	Pipe Spacer	
BR150-14C	8	Steel Bar Bolt	
BR150-14b	8	Steel Bar Bolt	
BR150-14A	8	Steel Angle	

PAINT - one shop coat red lead

DATE		REVISED FOR		MARK		REQ'D	MAT'L	REQ. NO.	NAME		REMARKS		
				BILL OF MATERIAL									
				JOHN A. ROEBLING'S SONS CO., TRENTON, N. J.									
										DEER ISLE BRIDGE REINFORCEMENT			
										ASSEMBLY AND DETAILS			
										OF LOWER TOP CONNECTION			
				BY		REVISIONS		DATE					
				APPROVED		ROBINSON AND STEINMAN		SCALE 1/2" = 3'-0"		SERIAL		SHEET	
				FEB 23-1944						DES		BR150	
				CH. DR.						TR			14
				ENG'R						CH			
BR 150-6 Longitudinal Stay Details				TITLE									
DWG. NO.				REFERENCE DRAWINGS									

